

Christiane BERNARD
Head of Unit
REA - Security Research

The Research Executive Agency

SRC09

29 september 2009

Executive agencies

- Created by Commission decision
- Standard activities:
 - Implement programmes of the Commission
 - Operational tasks only – no policy role
 - Lifetime of the programme concerned only (renewable if the programme is renewed)

Two agencies have been set up on 14 December 2007

- ERC Executive Agency (ERCEA): to support implementation of the Ideas programme
- Research Executive Agency (REA): to support parts of the other indirect actions of FP7

Reasons for creating executive agencies

- Constant staff numbers in the financial perspective 2007 to 2013
- Explosion in FP budget after 2010
- New areas to manage within FP7
- Professionalise programme management
- Staffing stability

Overview of the Research Executive Agency (REA)

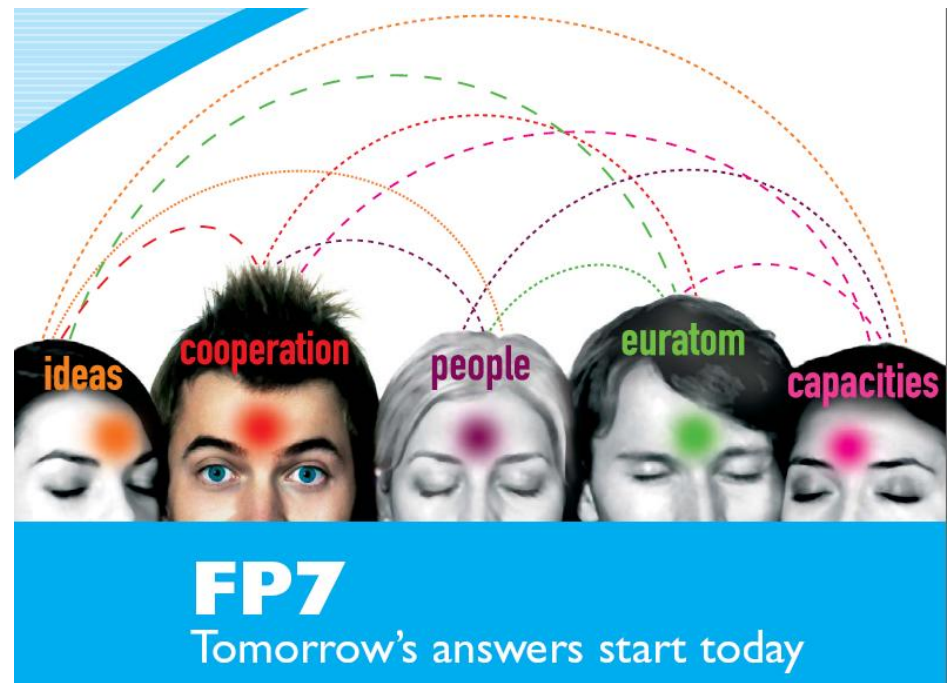


- Located in Brussels
- Total budget managed: € 6.5 billion
- 2008 – 2017
 - Lifetime of FP7 (to 2013), then a run down to 2017 of projects under management
 - Reviewed every three years
 - Potential to extend after FP7

REA – Tasks (1)

The REA will directly implement these parts of FP7:

- People programme
 - Marie-Curie Actions (€ 4 billion)
- Cooperation programme
 - Security and Space themes (DG ENTR, € 1.4 billion)
- Capacities programme
 - Research for the benefit of SMEs (€ 1 billion)



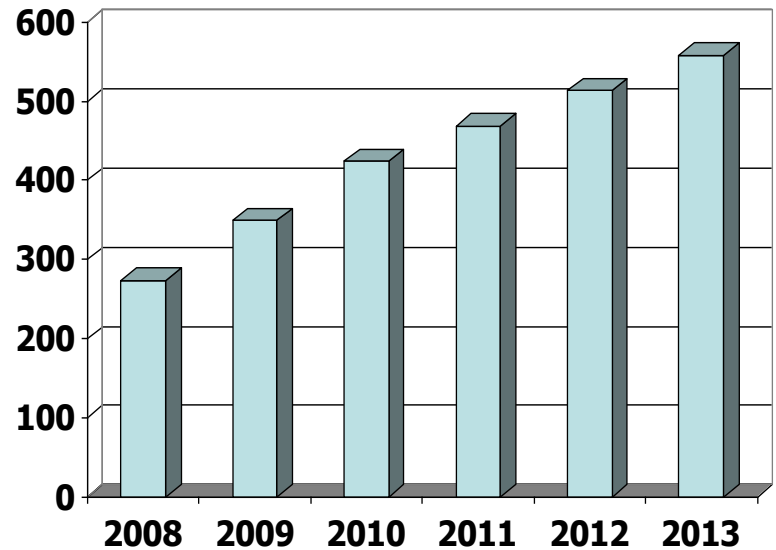
REA – Tasks (2)

The REA will provide “horizontal” services across the three specific programmes Cooperation, People, Capacities, i.e.:

- Run the **evaluation facility** in Covent Garden, Place Rogier (“COVE”)
- Provide a **central service for contracting and paying external expert** evaluators
- Provide services for the **URF (unique registration facility)** and legal and financial viability service
- Run the central **FP7 enquiry service**

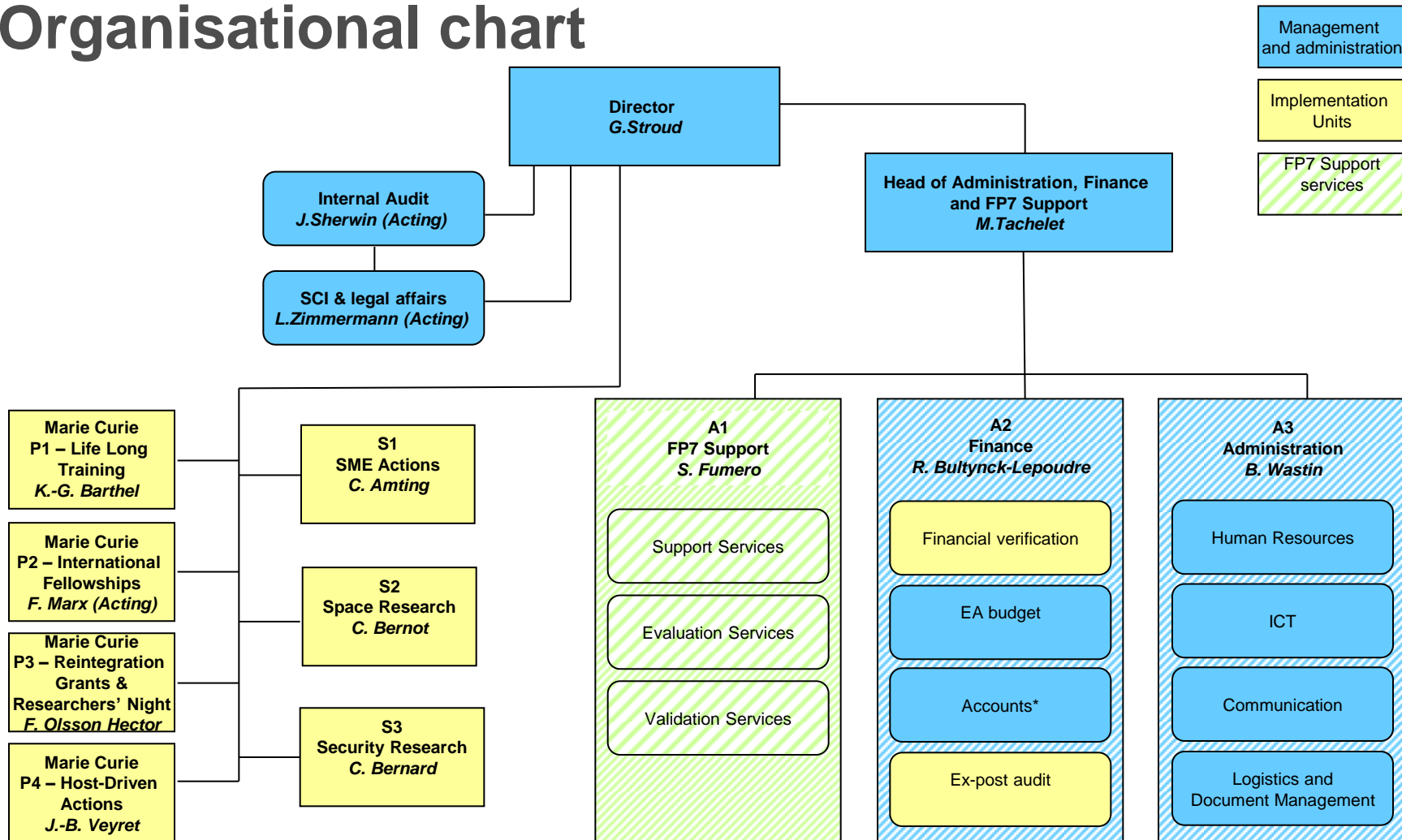
Staffing of the REA

- Maximum 558 staff by 2013
 - 274 in 2008
 - 349 in 2009
 - 424 in 2010
 - 468 in 2011
 - 513 in 2012
 - 558 in 2013



- Staff profile: 75% contractual agents; 25% temporary agents; maximum of 27 seconded from the Commission

Organisational chart



*reporting to the Director

Main tasks for Security Research unit

- REA is in charge of the **management** of the FP7 security theme
 - (1) organising the evaluation of all proposals
 - (2) negotiation of proposals and management of projects **except**:
 - **Sensitive projects** (outcome of the scrutiny procedure)
 - **Specific topics** identified by DG-ENTR in the WP (including Demo phase II)
- **Policy** work remains within the Commission

Transfer of tasks

- DG ENTR and REA have worked side-by-side during initial phase
- From 15 June 2009, the agencies have taken over full implementation of new calls and projects
 - FP7-SEC-2007-1: 37 projects
 - FP7-ICT-SEC-2007-1: 9 projects
 - FP7-SEC-2009-1: 24 projects being negotiated
 - FP7-SEC-2010-1: call publication, info day, helpdesk, evaluation, ...
- **Cooperation** between DG ENTR and REA will continue during the life of the agency: training, brainstorming, exchange of information, evaluation done together, ...
- **REA has its own legal personality**, but is supervised and controlled by the European Commission
 - M. Weissenberg is member of the **REA Steering Committee**

Future prospects

- All agencies and joint undertakings linked to the Framework Programme – budget to 2013
 - Allowance for the running down of activities until 2017
 - Except ITER – 35 years
- However,
 - If successful, potential to renew
 - If successful, potential to expand
- Political decision
 - Council and Parliament

REa – Research Executive Agency

<http://ec.europa.eu/research/rea>

REa-Security-Projects@ec.europa.eu

@ REa-INFO@ec.europa.eu
✉ COV2 ▪ 1049 Brussels ▪
Belgium
site 16 Place Rogier ▪
1210 Brussels
☎ +32-2-299 11 11
📄 +32-2-297 96 09



Photo: C. Pouret. Architects: ART & BUILD / MONTOIS PARTNERS